

RRU WALL SUPPORT

ONLY FITS
ERICSSON EQUIPMENT

FITS ERICSSON RRU MODELS: RRUW, RRUS 01, RRUS 11

THE RRU WALL SUPPORT

is designed for installation of 1 RRU with the possibility to attach a PSU or A2 unit on the back. Fastening kits can be supplied depending on wall quality.

FLEXIBILITY

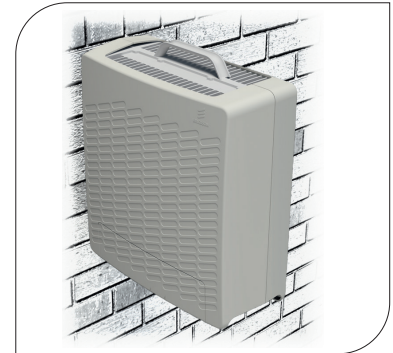
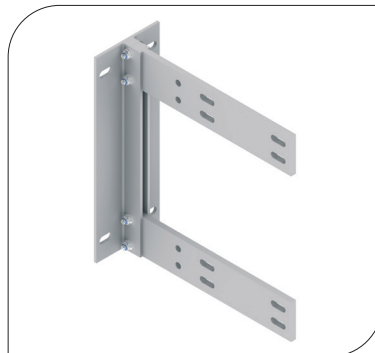
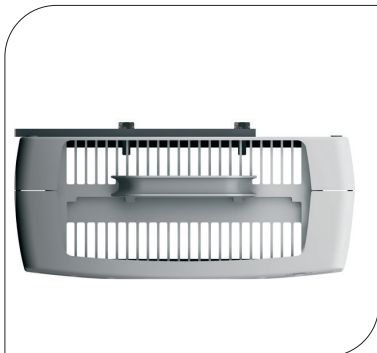
The support fits the Ericsson RRU models RRUW 01, RRUS 01, RRUS 11 & RRUS 12.

QUALITY

All components are made of anodized aluminium and stainless steel which gives the support excellent corrosion resistance.

EASY ASSEMBLY

The choice of materials makes the product very light which makes the handling and installation very easy.



ORDER AND TECHNICAL INFORMATION

DRAWING NO:	CD 990608			
FUNCTION DESCRIPTION:	Wall support kit with space for one RRU mounted perpendicular on the wall.			
MECHANICAL DATA:	WALL INSTALLATION: Threaded M12 Rods or expander bolts		ANGLES AND SUPPORTS: Aluminium, Nature anodized 20µm	
PACKAGE DIMENSIONS:	LENGTH: 390 mm (15,3 in)	WIDTH: 85 mm (3,3 in)	HEIGHT: 85 mm (3,3 in)	WEIGHT: 2,5 kg (5,5 lb)

NOTE! RRU is not included.

Quality Design